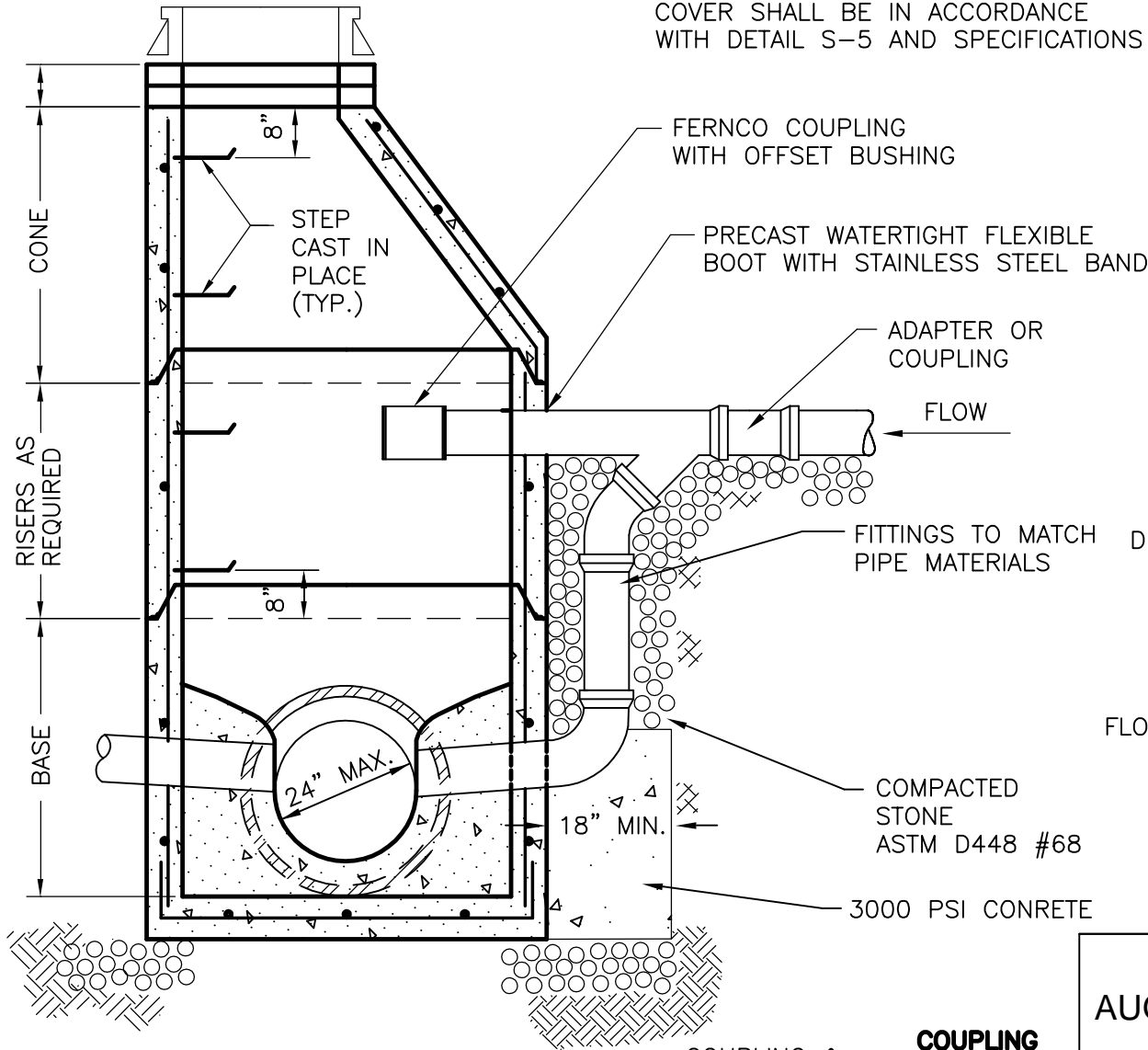
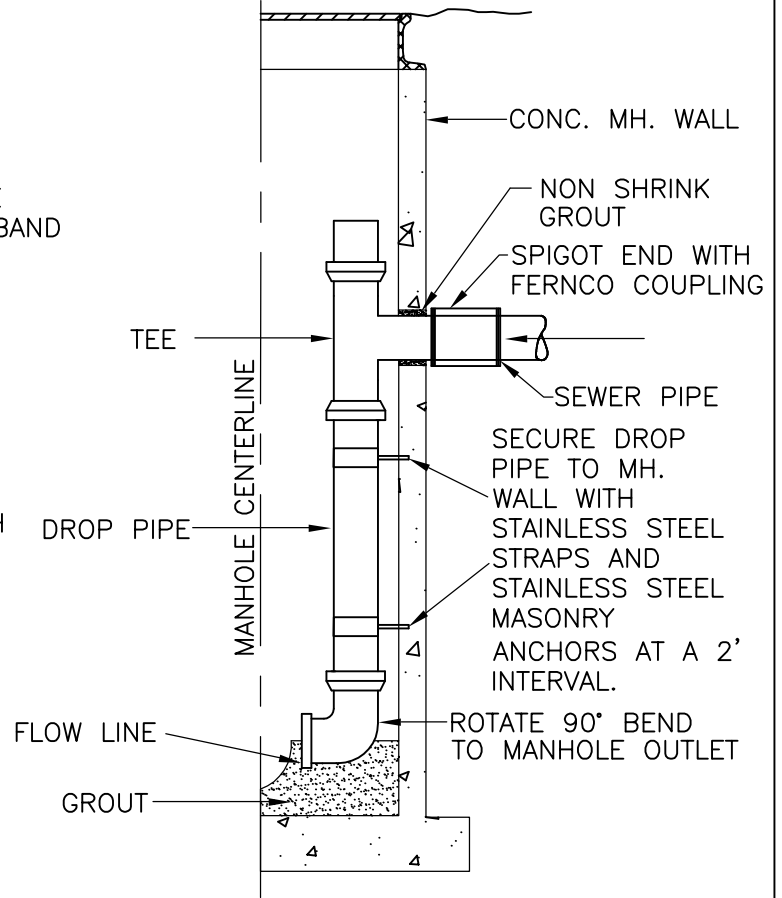


**EXTERIOR DROP CONNECTION DETAIL**

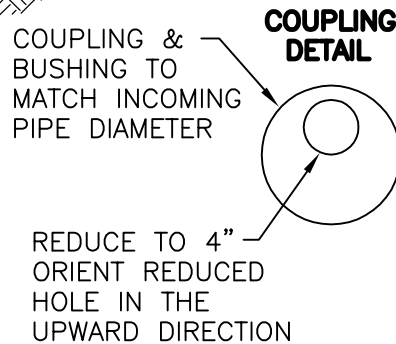
\*PRECAST MANHOLE AND FRAME & COVER SHALL BE IN ACCORDANCE WITH DETAIL S-5 AND SPECIFICATIONS



**INTERIOR DROP CONNECTION DETAIL FOR PIPE 6" OR LESS AS APPROVED BY ACSA**



NOTE: MATERIALS AND FABRICATION SHALL BE IN ACCORDANCE WITH ASTM C478 UNLESS OTHERWISE SHOWN. CONE SHALL BE OF THE ECCENTRIC TYPE. FOR NEW LINES, CONNECT PIPE TO SECTION WITH APPROVED FLEXIBLE WATER-TIGHT SLEEVE OR GASKET (INTERPACE OR EQUAL). THE FLEXIBLE WATER-TIGHT SLEEVE OR GASKET SHALL BE INSTALLED PER THE MANUFACTURER'S RECOMMENDATIONS.



**AUGUSTA COUNTY SERVICE AUTHORITY  
VERONA, VIRGINIA**

SCALE: NONE

DRAWN BY:

DATE: FEB. 1996

REVISED: AUG. 2004

**TYPICAL MANHOLE  
WITH DROP CONNECTION**

DRAWING NUMBER: S-4

PAGE: 1 OF 1