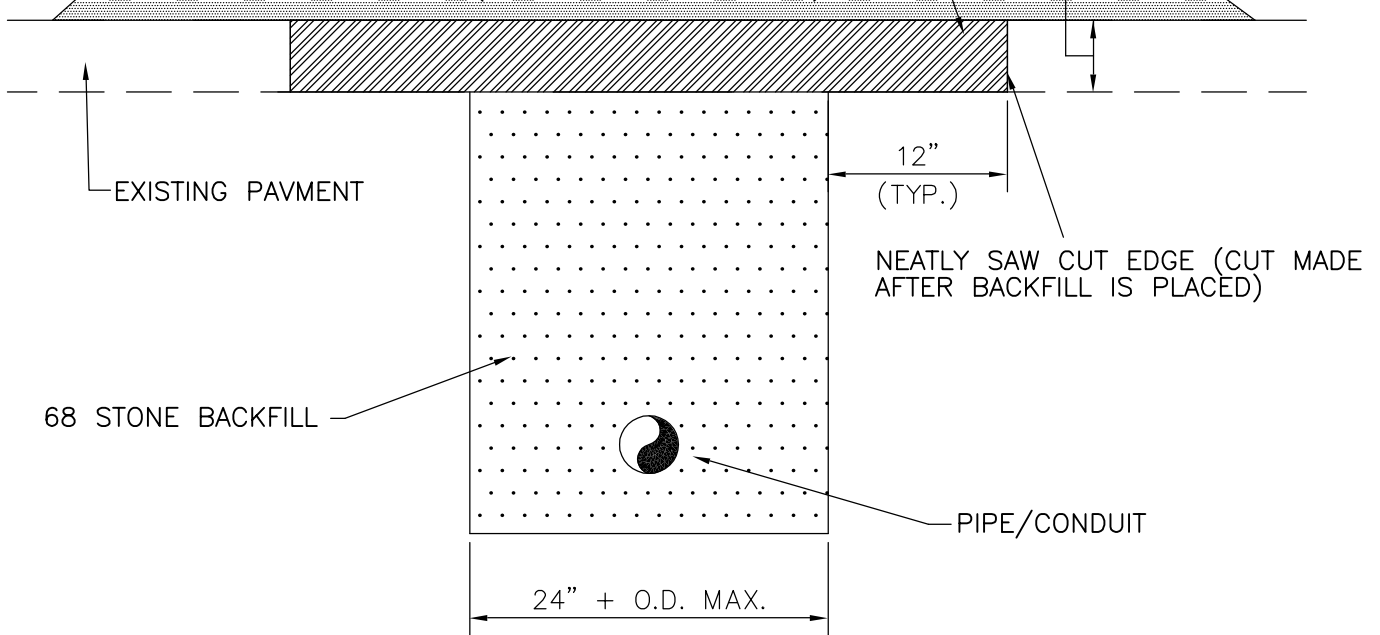


1" SM-2A OVERLAY FOR PAVED ROADS OR PAVEMENT SEAL FOR SURFACE TREATED ROADS (SEE NOTE 5)

SM-2A OR CONCRETE PAVING TO PROVIDE SMOOTH RIDE (SEE NOTE 6)

FOR ASPHALT:
1.5 TIMES DEPTH OF EXISTING PAVMENT (MINIMUM 2" SM-2A)
FOR CONCRETE:
MATCH EXISTING THICKNESS

PAY LIMITS FOR PAVEMENT PATCH (IF UNIT PRICE BID ITEM)



NOTES:

1. REPAIRED SURFACE TO BE AT LEAST AS GOOD AS ORIGINAL SURFACE.
2. PAVING TO BE PLACED WITHIN 5 WORKING DAYS OF UTILITY INSTALLATION. (STONE TO BE BROUGHT UP TO STREET SURFACE AND MAINTAINED DURING 5 DAY INTERIM.)
3. DURING COLD WEATHER, COLD MIX TO BE USED AS TEMPORARY MEASURE. PERMANENT SM-2A PAVING TO BE PLACED WITHIN 3 WEEKS OF START UP OF HOT MIX PLANTS. CHECK STONE AND REFILL/TAMP AS NECESSARY, AT LEAST WEEKLY, UNTIL RESURFACED.
4. TRAFFIC SAFETY MEASURES ARE REQUIRED; IN ACCORDANCE WITH THE VA WORK AREA PROTECTION MANUAL.
5. WHERE REQUIRED, THE MINIMUM OVERLAY OR SEAL WIDTH FOR PERPENDICULAR INSTALLATIONS SHALL BE EQUAL TO THE WIDTH OF THE ROAD. MINIMUM OVERLAY OR SEAL WIDTH FOR PARALLEL INSTALLATIONS SHALL BE ONE HALF THE ENTIRE WIDTH OF THE ROAD.
6. PATCH SHALL BE OF A MATERIAL EQUIVALENT TO EXISTING.

AUGUSTA COUNTY SERVICE AUTHORITY VERONA, VIRGINIA	
SCALE: NONE	DRAWN BY:
DATE: AUG. 2004	REVISED:
TYPICAL PAVEMENT PATCH	
DRAWING NUMBER: G-7	PAGE: 1 OF 1